



Special prices in hotels
for patients, families,
visitors and trainees
at Grenoble Alpes University Hospital

2021 rates





Upon your coming to Grenoble Alpes University Hospital, you might need hotel accommodation.

In order to help you find an accommodation fitting your needs and to reduce the cost of this stay, Grenoble Alpes University Hospital has approached hotels and arranged preferential rates.

Hoping it will help you organize your stay.

Table

Map of referenced residences and hotels.....	2
Hospital Family Home	3
Galilée Residence – only for visitors and trainees	4
Marie Curie Residence	5
Caserne de Bonne Residhome	6
Angleterre Hotel (Grenoble hyper Center)	7
Ibis Hotel, Grenoble Center	8
Les Trois Roses Hotel.....	9
Le Mokca Hotel.....	10
Mercure Hotel, Meylan	11
Mercure Hotel Alpotel, Grenoble Center.....	12
Novotel Hotel, Grenoble Center.....	13
Park Hotel Grenoble	14
Best Western Dauphite Hotel, Echirolles	15

Map of referenced residences and hotels

NOT FOR PROFIT RESIDENCE

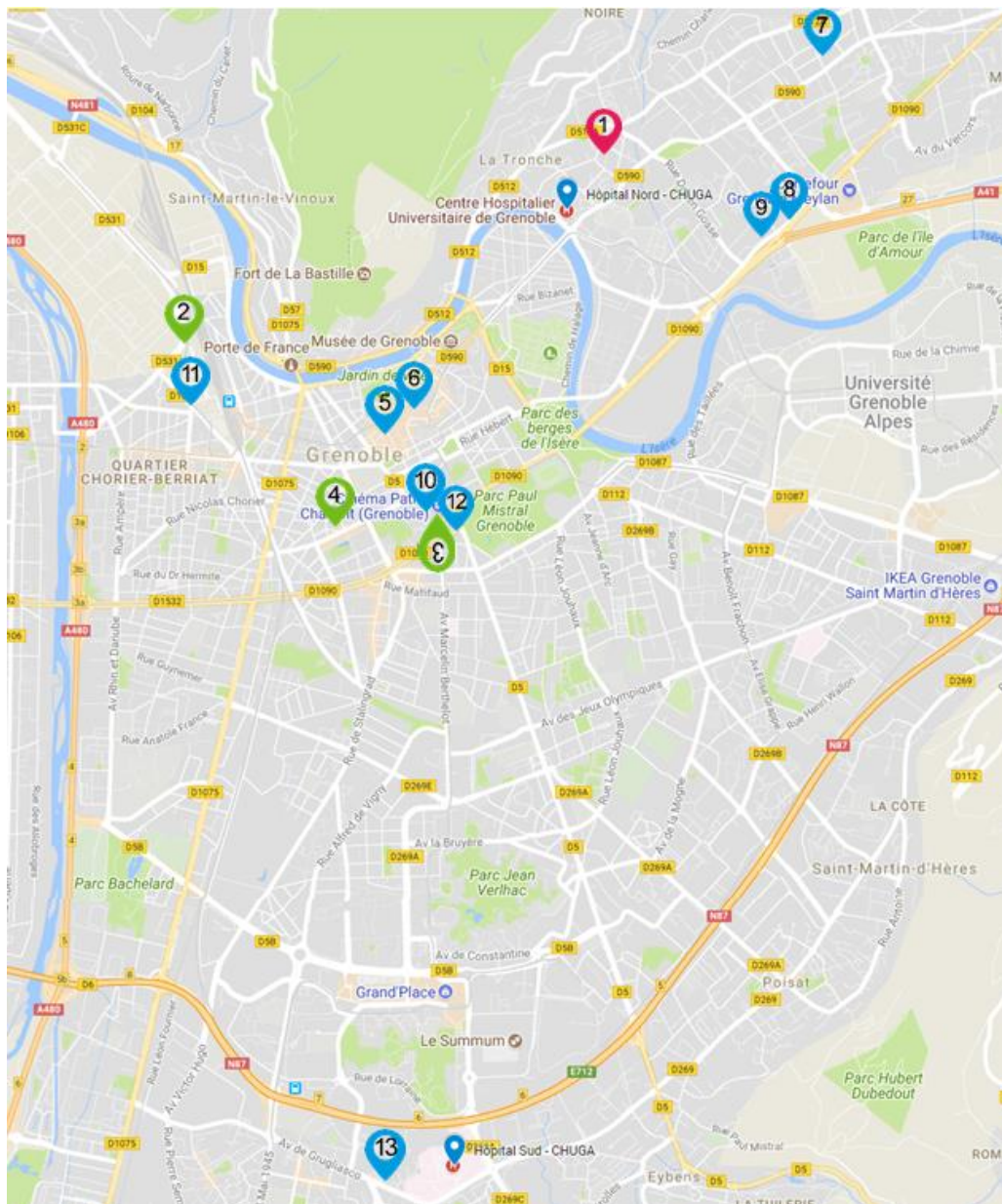
- 1** The Hospital Family Home
- 2** Marie Curie residence, 2*
- 3** Galilée residence
- 4** Caserne de Bonne residhome, 4*

APPART'HOTELS

- 2** Marie Curie residence, 2*
- 3** Galilée residence
- 4** Caserne de Bonne residhome, 4*

HOTELS

- 5** Angleterre Hotel, 3*
- 6** Ibis Hotel, Grenoble center, 3*
- 7** Les 3 Roses Hotel, 3*
- 8** Le Mokca Hotel 3*
- 9** Mercure Meylan Hotel, 4*
- 10** Mercure Hotel, Grenoble Center, 4*
- 11** Novotel Hotel, Grenoble Center, 4*
- 12** Park Hotel Grenoble, 4*
- 13** Best Western Hotel, Echirolles, 4*



Hospital Family Home

Contacts

-  1 place de l'Eglise, 38700 La Tronche
-  33 (0)4 76 42 26 68
-  maisonfamiliale-hospitaliere@orange.fr
-  <http://maisonfamiliale-hospitaliere.blogspot.ie/>

➔ Reservation by mail or phone



Special prices

	1 day	With shower
1 person	42 €	45 €
2 persons	70 €	75 €
Children form 0 to 4	Free	
Children form de 5 to 10	20 €	
Extra bed	27 €	





Listed prices include bed and breakfast with an evening meal.

Extra meal: 10 €

Galilée Residence

This accommodation, located on the university campus, is only accessible to CHUGA's visitors and trainees. It is not suitable for patients and their families.

Contacts

-  6 place Pasteur, 38000 Grenoble
-  residence-galilee@crous-grenoble.fr
-  33 (0)4 76 94 32 51
-  <http://www.crous-grenoble.fr/demanderunlogement/logement-enseignants-chercheurs-doctotrant/>

- ➔ Reservation by mail or on their website
- ➔ **You need to mention you are visiting Grenoble Alpes University Hospital**



Special prices

	1 person	2 persons
1 to 8 nights	33 € to 44 €	60,50 € to 71,50 €
9 to 29 nights	27.50€ à 38.50 €	55 € to 66 €
More than 30 nights	16.20 € to 27.50 €	27.50 € to 44 €

Listed prices are for a **studio equipped with an individual kitchen.**

There is no catering service in the residence.

Marie Curie Residence



Contacts

-  58 rue Félix Esclançon, 38000 Grenoble
-  grenoble.mariecurie@sejours-affaires.com
-  33 (0)4 76 84 72 22
-  <http://www.sejours-affaires.com/residence-hoteliere-aparthotel-grenoble-7.html>

- ➔ Reservation by mail or phone
- ➔ You need to mention you are visiting Grenoble Alpes University Hospital.



Special prices

	3-6 nights	7-27 nights	> 27 nights
2-people studio	37 €	31 €	28 €
Premiun studio – 2 people	52 €	44 €	41 €

Listed prices are for a **studio equipped with an individual kitchen.**



Listed prices do not include buffet breakfast - add 8 €

Caserne de Bonne Residhome



Contacts

-  31 rue Lazare Carnot, 38000 Grenoble
-  33 (0)4 76 86 88 88
-  grenoble.debonne@residhome.com
-  <http://www.residhome.com/residence-hoteliere-aparthotel-grenoble-194.html>

- ➔ Reservation by mail or phone
- ➔ **You need to mention you are visiting Grenoble Alpes University Hospital.**



Special prices

	1-4 nights	5-27 nights	5-27 nights
2 persons-studio	76 €	66 €	59 €
Large 2-personn studio	88 €	77 €	68 €
T2 appartement – up to 4 people	93 €	81 €	73€

Listed prices are for a studio equipped with an individual kitchen.



Listed prices do not include buffet breakfast - add 11,50 €

Angleterre Hotel (Grenoble hyper Center)



Contacts

- 5 place Victor Hugo, 38000 Grenoble
- +33 (0)4 3888 4040
- reservations@hotel-angleterre-grenoble.com
- www.hotel-angleterre-grenoble.com

- ➔ Reservation by mail or phone
- ➔ **You need to mention you are visiting Grenoble Alpes University Hospital.**
- ➔ Cancellation policy : free of charge up until noon the day of arrival
- ➔ Pay at check-in



Special prices

	Weekdays	Weekends (Friday to Sunday)
1 person	79 €	54 €
2 persons	89 €	64 €



Listed prices do not include buffet breakfast - add 9,80 €

Booking for 3 nights and more : free buffet breakfast

- ➔ Superior room : add 20 €
- ➔ Agreement with Philippeville car park (city center) : 14€ / 24h ou 11€/night (from 6PM to 10AM)

Ibis Hotel, Grenoble Center



Contacts

-  5 rue Miribel, 38 000 Grenoble
-  +33 (0)4 76 47 48 49
-  www.ibishotel.com

- ➔ Reservation by mail or phone
- ➔ **You need to mention you are visiting Grenoble Alpes University Hospital.**
- ➔ Cancellation policy: free of charge up until noon on the day of arrival.



Special prices

	Weekdays	Weekends (Friday to Sunday)
Bedroom for 1 or 2 persons	80 €	70 €

- ➔ Including buffet breakfast for 1 person.
- ➔ If there are two people in the room, you must add 9.90€ for breakfast.

Les Trois Roses Hotel



Contacts

-  32 avenue du Grésivaudan, 38700 Corenc
-  +33 (0)4 76 89 39 61
-  reservation@lestroisroses.com
-  www.lestroisroses.com

- ➔ Reservation by mail or phone
- ➔ **You need to mention you are visiting Grenoble Alpes University Hospital.**



Special prices

	1 person	2 persons
1 to 3 nights	60€	70€
More than 4 nights	50€	60€



Listed prices do not include buffet breakfast - add 13 €

Booking for 10 nights and more : free buffet breakfast

- ➔ DELUXE bedroom : Add an extra 15€ per night for this room

Le Mokca Hotel



Contacts

-  20 avenue de Verdun, 38240 Meylan
-  +33 (0)4 76 90 42 65
-  contact@mokca.fr
-  www.mokca.fr

➔ Reservation by mail or phone
 ➔ **You need to mention you are visiting Grenoble Alpes University Hospital.**



Special prices

	Weekdays	Weekends (Friday to Sunday)
1 to 10 nights-stay	69 €	59 €
More than 10 nights-stay	- 10 %	- 10%



Listed prices do not include buffet breakfast - add 12 €

Mercure Hotel, Meylan



Contacts

-  34 avenue de Verdun, 38240 Meylan
-  33 (0)4 76 90 63 09
-  www.accorhotels.com

- ➔ To get these prices, you must call the hotel directly and make a reservation simply **announcing that you are coming via Grenoble Alpes University Hospital.**
- ➔ No prepayment
- ➔ Cancellation policy: free of charge until 6PM the day of arrival.



Special prices

	From Monday to Sunday
Single room	105 €
Double room	117 €

- ➔ Including buffet breakfast
- ➔ Privilege room : Add an extra 15€ per night

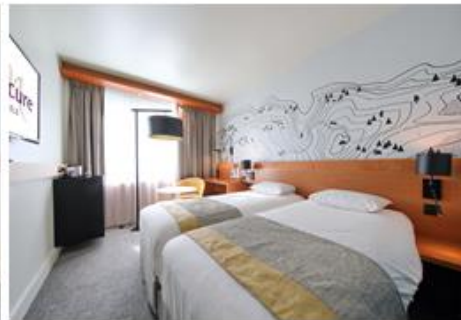
Mercure Hotel Alpotel, Grenoble Center



Contacts

-  12 boulevard Maréchal Joffre – 38000 Grenoble
-  +33 (0)4 76 87 88 41
-  H0652@accor.com
-  <http://www.accorhotels.com>

- ➔ To get these prices, you must contact the hotel directly (by phone or email) and make a reservation simply **announcing that you are coming via Grenoble Alpes University Hospital.**
- ➔ No prepayment
- ➔ Cancellation policy: free of charge up until 48h before the date of arrival.



Special prices

	Weekdays	Weekends (Friday to Sunday)
Bedroom for 1 or 2 persons	110 €	99 €

- ➔ Including buffet breakfast
- ➔ Privilege room : Add an extra 15€ per night

Novotel Hotel, Grenoble Center



Contacts

-  7 place Robert Schuman, 38000 Grenoble
-  +33 (0)4 76 70 84 84
-  www.novotel.com

- ➔ To get these prices, you must call the hotel directly and make a reservation simply **announcing that you are coming via Grenoble Alpes University Hospital.**
- ➔ No prepayment
- ➔ Cancellation policy: free of charge up until 48h before the date of arrival.



Special prices

	Weekdays	Weekends (Friday to Sunday) + July and August
Rooms for 1 or 2 persons, or 2 adults and 2 children	132 €	110 €

- ➔ Including buffet breakfast
- ➔ Free parking

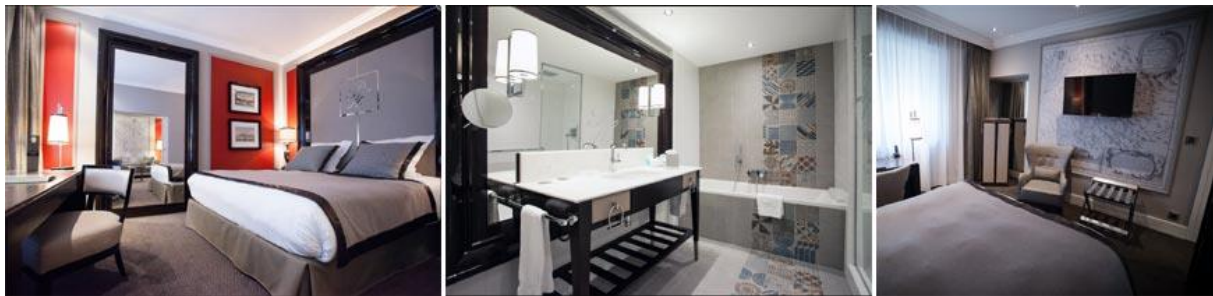
Park Hotel Grenoble



Contacts

-  10 place Paul Mistral, 38100 Grenoble
-  + 33 (0)4 76 85 81 23
-  H9350@accor.com
-  www.park-hotel-grenoble.fr

- ➔ Reservation by mail or phone
- ➔ **You need to mention that you are visiting Grenoble Alpes University Hospital.**



Special prices

	Weekdays	Weekends (Friday to Sunday)
Classic room	129 €	119 €
Superior room	149 €	129 €
Suite	179 €	159 €

- ➔ Including breakfast

Best Western Dauphite Hotel, Echirolles

Contacts


-  16 avenue de Kimberley, 38130 Echirolles
-  +33 (0)4 76 33 60 60
-  info@dauphite.fr
-  www.dauphite.fr

➔ Reservation by mail or phone
 ➔ **You need to mention that you are visiting Grenoble Alpes University Hospital.**



Special prices

	From Monday to Sunday
Room for 1 or 2 persons	77 €

 Listed prices do not include buffet breakfast - add 11 €